

L20

full range arrayable mid field loudspeaker

The Quint Audio L20 is a 'double ten' full range loudspeaker module designed for scalable vertical array setups in mid field PA applications.

The arrayable L20 is built symmetrically and has a number of special features. Characteristic to the L20 is the powerful large format coax driver mounted on a horn/waveguide combination that guarantees a constant directivity of 110 degrees linear in a frequency range running from 500Hz to over 16000Hz. The low end is provided by two high-q 10" woofers with high output and low distortion.

The crossover of the L20 is set in such a way that in the mid frequencies the waveguide and the woofers work together in perfect coherence over a large bandwidth, so that in this area a huge surplus in dynamic headroom and directivity is realized which strongly supports the vocals in live setups.

Due to the use of a pair of carefully selected 10" woofers and a relatively low cabinet tuning, the L20 has remarkably good full-range properties. Accompanying sub loudspeakers in an array, are therefore not specifically necessary, especially not in longer L20 arrays. The L20 thus represents best of both worlds; full range audio & high efficiency output combined in one single cabinet.

By its compact and smart design, the L20 is user friendly in handling and rigging and very forgiving in setting up.

DESIGN:

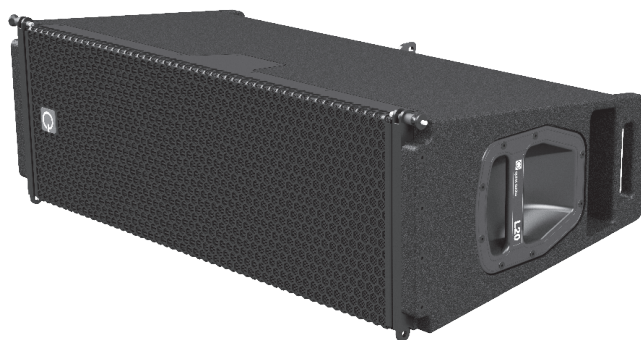
The Quint Audio L20 is a 2x10"ND/4"ND/2,5"ND coaxial 3-way actively/passively filtered scalable full-range speaker system.

The 10-inch neodymium woofers of the L20 contain a lightweight carbon fiber loaded cone. This provides extra strength, high efficiency and low harmonic distortion even under severe mechanic stress.

The state of art 4"/2,5" ND driver with a patent pending midrange integrator allows both coaxial diaphragms to work in parallel over a wide bandwidth. This translates in greater combined output. The over all throat exit is 1.4". The driver is mounted on a specially designed wave guide, followed by a constant directivity horn with a precise opening angle of 120 degrees horizontally.

The L20 is built of birch plywood and equipped with a wear-, tear- and impact-resistant hybrid coating. Various internal bracings and metal supports are applied in order to increase the rigidity of the design. The front is finished by a coated steel grille with an acoustically transparent layer.

The L20 features an arrayable rigging system and several external rigging accessories are available. The L20 system needs to be powered by dedicated Quint Audio processing and amping.



model	L20
type	2x10"ND/4"ND/2.5"ND Coaxial
filter	bi-amplified + mid-high passive
power handling	1100W LF / 110W HF
program power	2200W LF / 220W HF
impedance	5 Ohms
sensitivity	100dB LF/108dB HF 1Wm
program SPL	134dB LF/131dB HF 1m
frequency range	68-20000 Hz
dispersion	110°x12° hvxv
weight	29 kg
size (wxhxd)	840 x 265 x 450 mm

